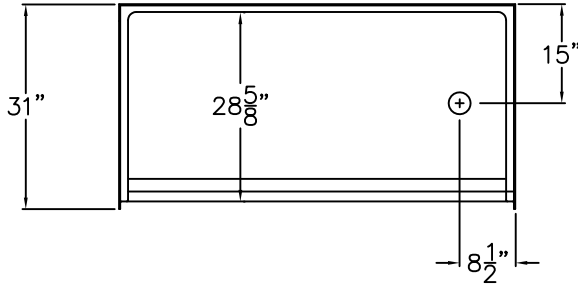
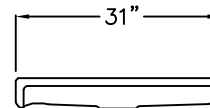


**EZABLE®**  
**SUBMITTAL DATA**

TOP VIEW



SIDE VIEW



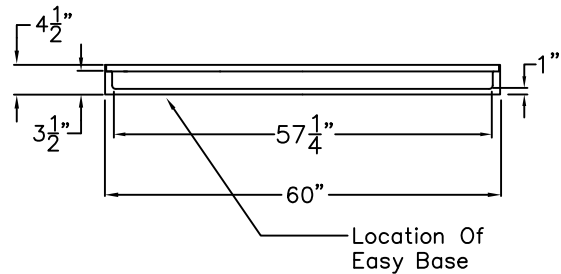
**Barrier Free Shower Pan**

The shower enclosure shall be EZAP6030 BF 1.0 Pan, Left-Right Drain. Finished surface shall be of a sanitary-grade Polyester Gelcoat exhibiting a minimal thickness of 15 dry mils, and a finished cured Barcol hardness of 80-90 as tested with ASTM D-2583. Unit construction shall be of molded reinforced fiberglass with a minimum fiberglass content. The unit shall have outside dimensions of 60" x 31" x 4 1/2". The gelcoat pan shall meet ANSI Z124.2, NAHB, UPC, comply with CSA, and shall meet the requirements of Southern Building Code.

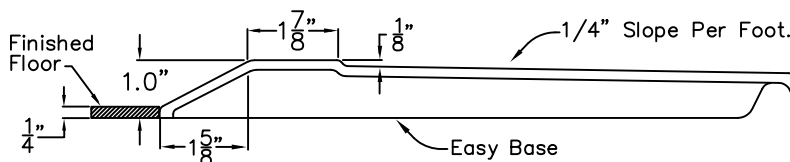
The enclosure shall be equipped with the following installed accessories:

- 1) Low entry 1.0" Threshold.
- 2) Available Left or Right Hand Drain Location.
- 3) Easy Base self-sustaining bottom.

FRONT VIEW



**Detail of 1.0" Threshold**



DUE TO THE NATURE OF THE MATERIALS INVOLVED  
 UNIT DIMENSIONS MAY VARY ± 1/2 INCH

Job Name:	EZABLE®		
Model No.:	Drawing#: EZAP6030 BF 1.0 Pan Left or Right Drain		
Approved by:	Date Approved:	Date: 3-31-09	Revised: 12-21-10
Rep.:	Wholesaler:	Quote No.	