

## B46CMM17XX Series Cloud

Acrylic stone sink with stainless steel hand pull / tower holder. Elbow rests. This sink does not have an overflow and the waste is exposed.

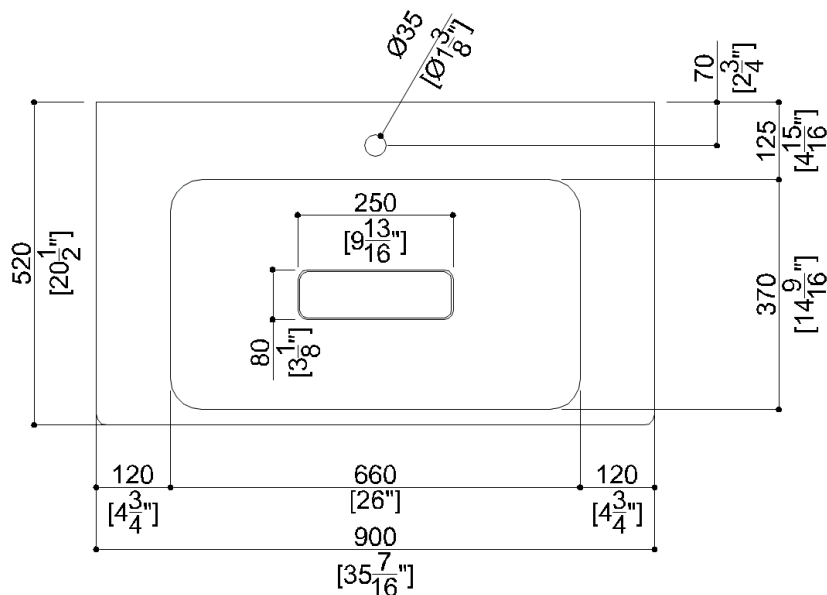
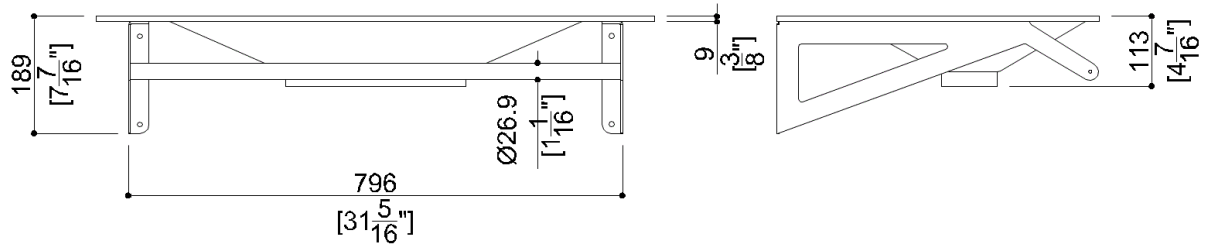
Support brackets with hardware that attaches to sink Mounting hardware supplied for wood stud installation. . Wall mounting hardware is Mounting hardware not supplied. .

### Product Data

Overall Dimensions (Inch.)	35-7/16 x 20-1/2 x 7-7/16
Net Weight (lbs.)	29.76

### Packaging Details

Package	Wooden crate package
Package dimensions (Inch.)	38-5/8 x 24-3/8 x 9-3/8
Weight with Packaging (lbs.)	55.12



## **B46CMM17XX** Series Cloud

### **Available Finishes (xx)**

Washbasin sink

W3

 Alpine white

### **Materials and finishes**

Acrylic stone	Matt
Steel	Polished
Stainless Steel	Polished

### **Load Capacity**

Vertical 331 lbs.

### **Warning**

Before installation and use, read the installation and use instructions in their entirety. If questions arise please contact Ponte Giulio company.

### **Cleaning**

Product can be cleaned with a cloth and warm soapy water. Non abrasive, solvent free cleaners can also be used.

### **Warranty**

Please visit [www.pontegiulio.com](http://www.pontegiulio.com) for complete warranty details.