



LEVEL ENTRY SHOWER SYSTEM

Evolution in comfort, functionality and safety of the bathroom

Beautiful barrier free bathrooms

Curbless design

Maintain independence, safety and hygiene

Age in our own homes

Superior waterproofing protects floors below

Easy to clean and maintain

Mitigates mold and mildew formation

Sleek designs add resale value and appeal

SUPERIOR WATER PROOFING

ASSURES PROPER PITCH

EASE OF INSTALLATION

ICC Code
Approved
System



877-392-2531
EZ Able[®]
www.ezable.com

LEVEL ENTRY SHOWER SYSTEM

Commercial application and specification

DESIGN FLEXIBILITY permits customized spaces for “wet” bathing areas. The engineered base may be easily cut to the dimension required. The system permits wet areas larger than the base, even entire rooms.

QUALITY CONTROLLED PITCH TO DRAIN the engineered platform assures a ¼” per ft. slope to drain throughout all wet areas.

NO RE-ENGINEERING OR COMPROMISES TO STRUCTURAL FLOORS On existing wood floorsystems the thin profile (7/8”) of the engineered base permits positioning on top of joists. Structural floor supports (traditional joists, TGI’s, or engineered truss systems) do not have to be cut or altered. On existing concrete floorsthe thin base requires only that a shallow profile (1.25”) be cut into the slab. For new constructionfloors the required 7/8”recess can be created by the framer, for wood floors, or templated and formed into concrete at a .5 - .875” depth for new concrete floors.

MOLD MITIGATION By replacing a mortar bed with the engineered platformand then applying the waterproofing membrane on top of the pitched, wet area, the chance of mold/mildew development is greatly reduced. Water that penetrates grout or tile immediately encounters the pitched, waterproofed membrane. Carefully engineered weep holes in the drain integrate with the membrane, allowing the shower to fully drain and “dry out”.

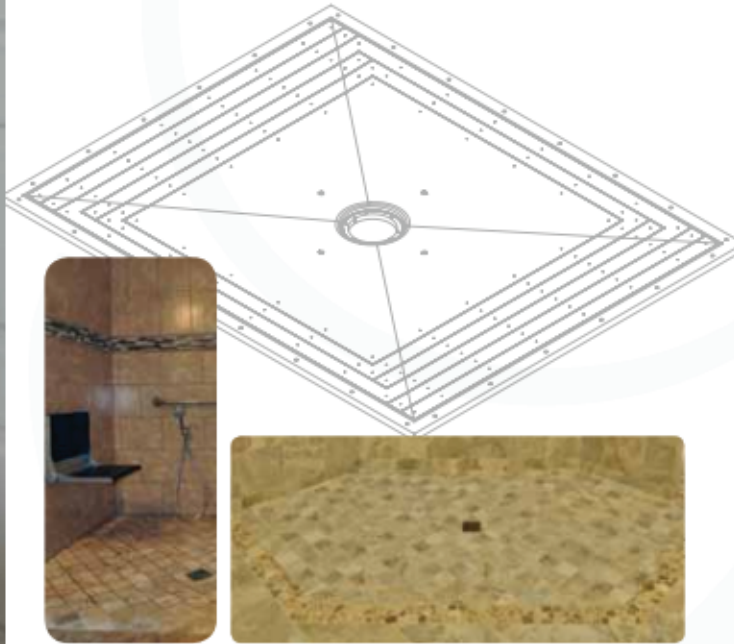
QUALITY CONTROLLED WATER-PROOFING AND CRACK SUPPRESSION MEMBRANE The “best practices” application for a liquid butyl rubber membrane with a fullycovered, embedded crack suppression fabric, insures an unmatched, resilient water-proofing membrane that will not be compromised by the expansion/contraction of dissimilar substrate materials.

ICC CODE APPROVAL OF THE ENTIRE SYSTEM The Level Entry Shower system is the first and, to date, only system of products that have been tested and approved to the new ICC standard LC-1030-2011 PMG listing for “Prefabricated, tilable shower receptor kits”. Each component of the “kit” (drain, base, and water-proofing) has code approval but, more importantly, the ICC has tested and approved the efficacy of the L.E.S. as a system, in use together.

BEST PRACTICES ASSURANCE The methodology of the installation of the L.E.S. is the result of extensive “best practices” experience gained over a two yearperiod of installations. The detailed installation procedure is the result of a collaborative effort between a master licensed plumbing contractor and master tile installer (with a combined 50 years of experience), in coordination with the manufacturers of the L.E.S. components.



Level Entry



Underlayment System where is it?

If you're looking for an elegant solution that performs without being noticed, or custom sizing for specific needs, look no further.

This solution provides an array of sizing and is engineered to receive ceramic tile (or coming soon commercial safety vinyl). Using this system alleviates the hassle and concern of correctly sloping the floor to the drain as well providing a leak proof seal. Universal Design at its best!

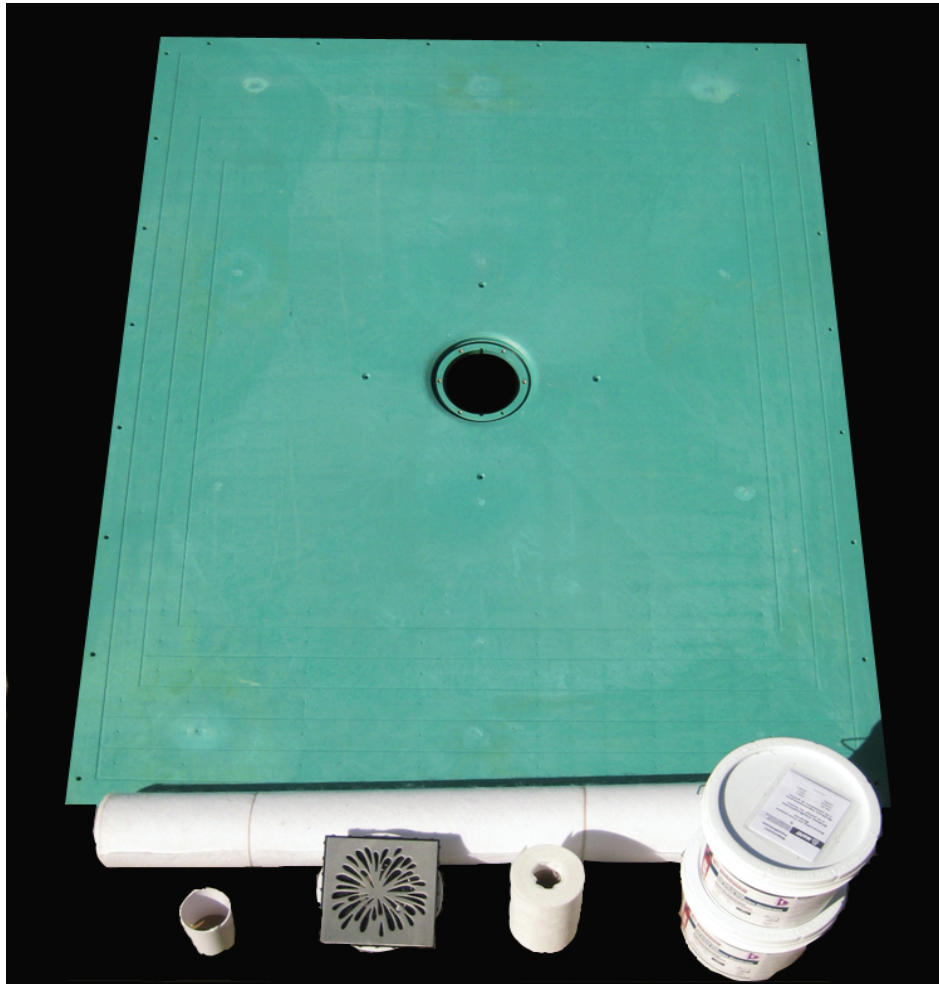
17

Cut-Away

This picture shows the different stages of installation of the Level Entry Shower system on a wooden floor.



This procedure may be used with any type of engineered truss or joist. The structural floor support does not have to be cut down or modified. Neither does the floor have to be built up in any way.



The Level Entry Shower kit is comprised of:

1 x LES6048 Base

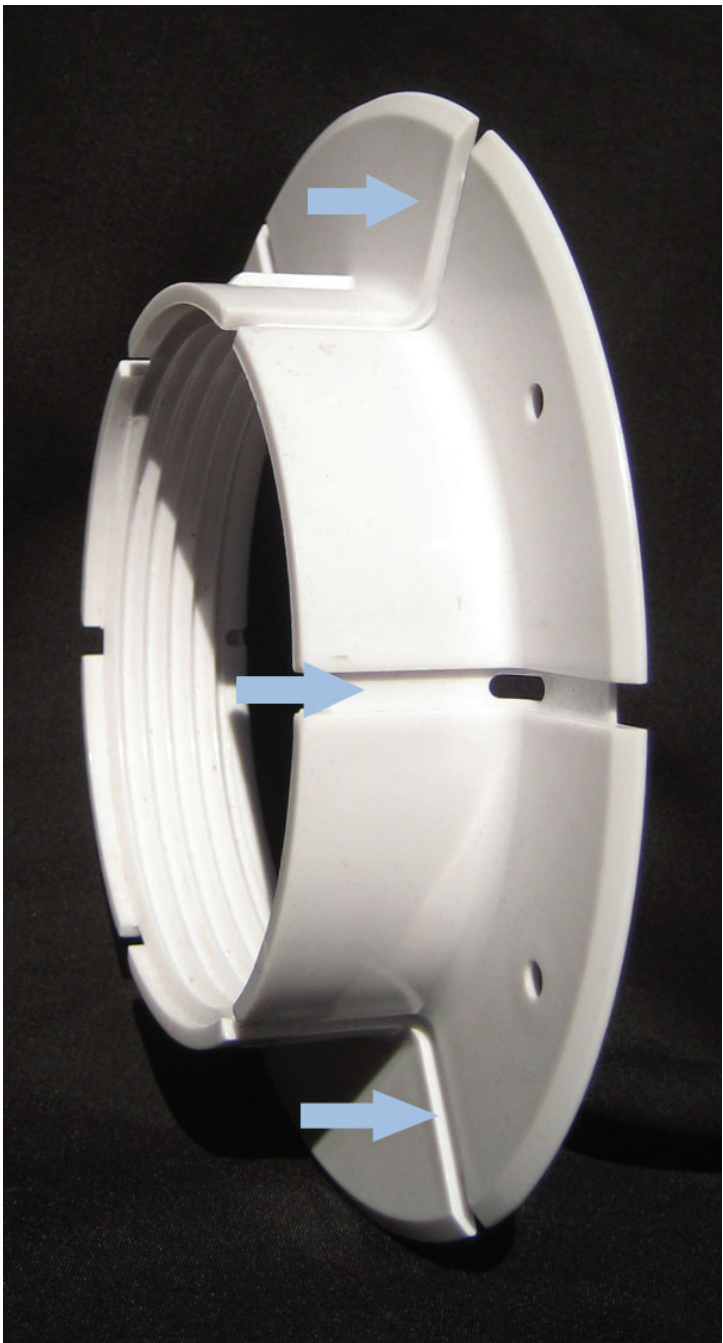
1 x LES2012 shower drain with std. brushed stainless steel strainer (round holes - standard)

1 x NA1740-6 6" x 75' crack suppression fabric

1 x NA1740-38 38" x 37.5' crack suppression fabric

2 x NA1750 one gallon waterproofing

**The kit provides up to 120 sq. ft. of water-proofing coverage. For wet areas requiring a pitched surface beyond the size of the base, NA500 Patch material may be ordered to supplement the above kit.*



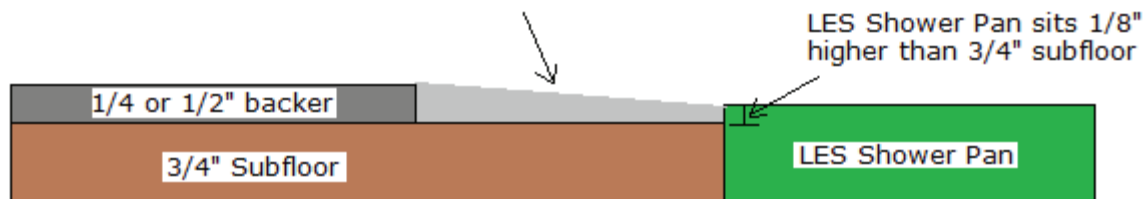
The Sure Dry Clamping collar assures that if/when water seeps beneath the finished tile & grout surface the shower will still drain out completely and dry (minimizing the development of mold & mildew). Since the L.E.S. water-proofing is applied on top of the pitched base, water that penetrates the finished surface immediately comes in contact with the pitched water-proofing membrane...the water will flow to the drain. The Sure Dry Clamping Collar, with its engineered drainage slots, integrates with the membrane & drain in such a way that water will thoroughly drain out & cannot escape except to exit down the drain.

The Sure Dry clamping collar is installed after the water-proofing has been applied assuring that the drainage slots cannot be blocked during installation. *For healthcare & other commercial facilities, the Sure Dry Clamping Collar & thorough drain/dry characteristics of the L.E.S. system act to minimize the sanitation consequences of urine and fecal matter penetrating finished tile surfaces.

Patch from wall to shower pan allows the user to easily create custom shower sizes.

Below is a detail of the use of Patch material to extend the shower floor pitch from the pan to the wall or threshold. The light gray slope represents the feathered Patch material. Water-proofing is then applied on top of both the Patch and L.E.S. pan.

If 1/4" Backer Board is used - The slope would be 1/4" to 1/8" over a 4" to 6" distance.
If 1/2" Backer Board is used - The slope would be 1/2" to 1/8" over a 9" to 12" distance.



For Product Pricing Please Contact:

Jody Fisk - EZ Able
jody@ezable.com

877.392.2531



PO Box 7118
Traverse City, MI 49686